

College Park designs and manufactures a full line of anatomically correct, custom built prosthetic solutions. College Park is ISO 13485 certified with an extensive focus on quality testing, and proudly sources and produces all products entirely in the USA. With precise engineering and quality manufacturing, College Park is committed to innovating human locomotion solutions for users all over the world.



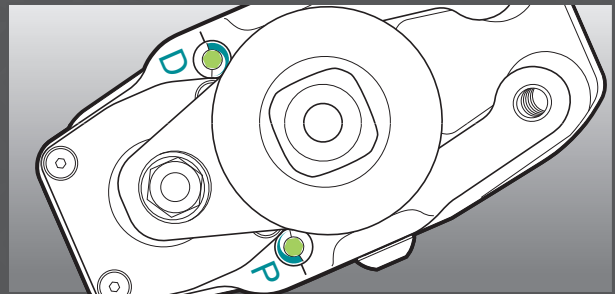


Hydraulic feet are renowned for increasing ground contact, reducing socket pressures and enhancing knee stability. College Park offers two robust solutions, both with a patented curved hydraulic unit to provide the lightest weight, lowest profile and most durable hydraulic feet on the market. The OdysseyK2 provides low impact patients an incredible range of controlled motion. The foot base is made with College Park's proprietary Intelliweave® composites for perfect gait-matched movement, increased ground contact for stability and a flexible heel. The OdysseyK3 utilizes a higher frequency carbon fiber foot base for an amplified dynamic response. The robust ankle housing and angular positioning was designed for moderate impact users able to balance without assistance.



### A REVOLUTIONARY CURVED HYDRAULIC SYSTEM

College Park Odyssey feet provide fluid control for superior knee stability and incredible ground contact. The patented curved hydraulic cylinder allows for one pivot point, resulting in a smoother sweep, longer life and the lowest profile hydraulic feet to date.



### CUSTOMIZABLE DUAL STRIDE CONTROL®

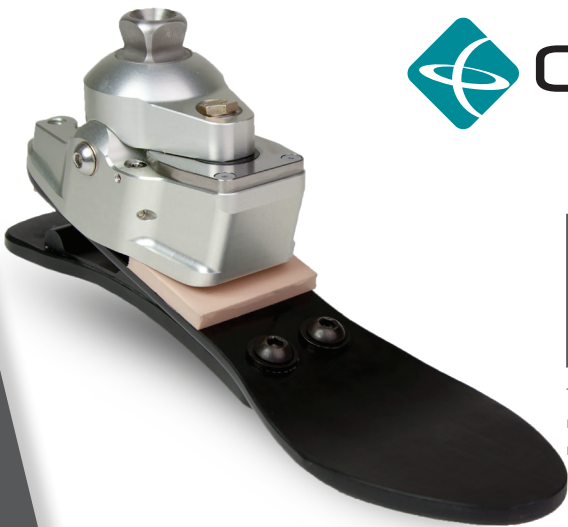
The Odyssey ankle has independently adjustable plantar and dorsiflexion valves for in-office tuning. Two valves for adjustment provide ideal comfort and stability, precisely to the patient's feedback.



The hydraulic system affords the Odyssey the ability to rest the foot flat on the floor when sitting, providing a natural appearance.



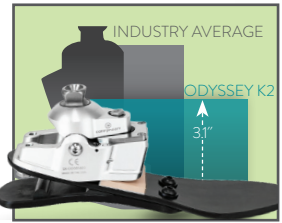
Hydraulics assist in force absorption, promote good posture and enhance knee stability.



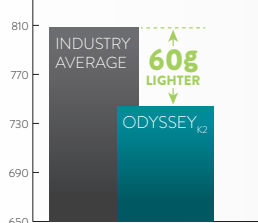
## odyssey<sup>®</sup><sub>K2</sub>



12 degrees of smooth hydraulic motion for a total range of motion up to 27 degrees.



The Odyssey<sub>K2</sub> clocks in at a 3.1" (7.8cm) clearance height, 1.4" lower than the industry average.



The Odyssey<sub>K2</sub> at 744g is the lightest hydraulic K2 foot on the market, 60g lighter than the industry average.

FOOT BASE	MOUNTING	SIZES	IMPACT LEVEL	WEIGHT LIMIT
Intelliweave®	Endo (IP)	21-30 cm	L	21-24 cm   220 lbs (100 kg) 25-30 cm   300 lbs (136 kg)
CLEARANCE	WEIGHT*	WARRANTY	L CODES**	ENVIROSHELL®†
3.1-3.3in (7.8-8.3cm)	744g	2 years	L5972 L5968	C T B standard

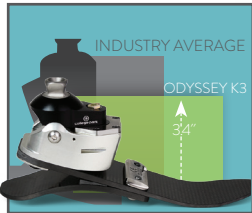
\*26cm model, including Enviroshell. \*\*The listing of codes with these products should not be construed as a guarantee for coverage or payment. Ultimate responsibility for the coding of services/products rests with the individual practitioner.  
† Caucasian, Tan or Brown.



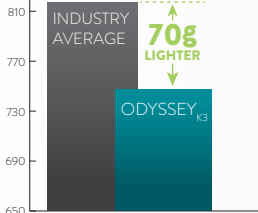
## odyssey<sup>®</sup><sub>K3</sub>



9 degrees of plantarflexion and 3 degrees of dorsiflexion



The Odyssey<sub>K3</sub> clocks in at a 3.4" (8.6 cm) clearance height, 20% lower than the industry average.



The Odyssey<sub>K3</sub> at 750g is the lightest hydraulic K3 foot on the market, 10% lighter than the industry average.

FOOT BASE	MOUNTING	SIZES	IMPACT LEVEL	WEIGHT LIMIT
Carbon Fiber	Endo (IP)	21-30 cm	L M	275 lbs (125 kg)
CLEARANCE	WEIGHT*	WARRANTY	L CODES**	ENVIROSHELL®†
3.4-3.6in (8.6-9.1cm)	750g	3 years	L5981 L5968	C T B standard

\*26cm model, including Enviroshell. \*\*The listing of codes with these products should not be construed as a guarantee for coverage or payment. Ultimate responsibility for the coding of services/products rests with the individual practitioner.  
† Caucasian, Tan or Brown.